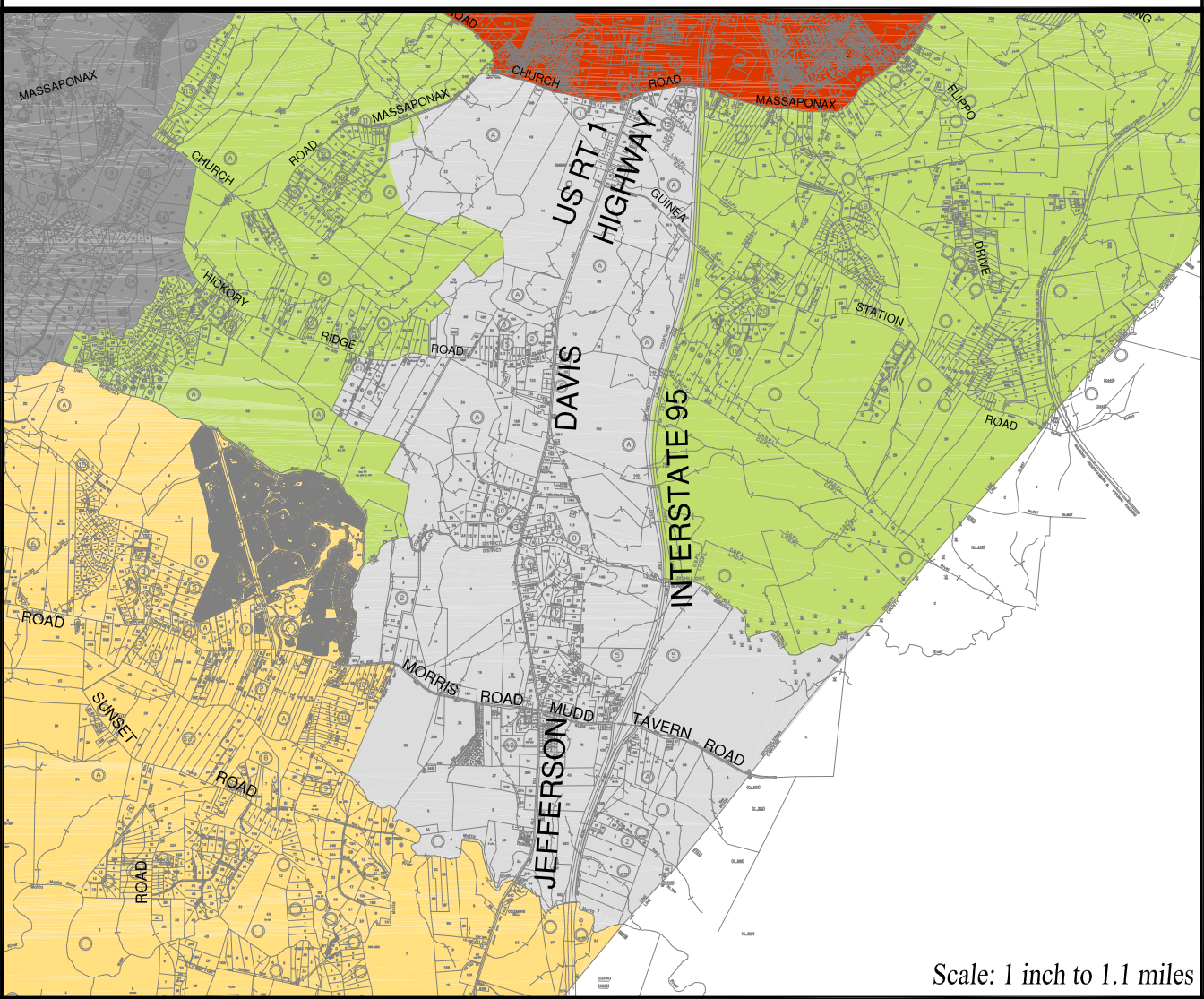


Jackson Gateway Development District

Vision

Jackson Gateway shall be provided with adequate infrastructure as to be the primary location for new office, industrial and commercial development within Spotsylvania County.



The Jackson Gateway Development District is located south of the Primary Settlement District and generally bounded by Massaponax Church Road (Route 608) at its intersection with Smith Station Road (Route 628), the Matta River, and Interstate 95.

