

# 10608 Courthouse Road

## PROPERTY DESCRIPTION

Incredible opportunity to own 5.39 acres, currently zoned R1 but in a prime commercial location next to Rite Aid, across from a grocery store, large real estate company, near a Wawa & dentist office. The property has 2 access points: Courthouse Road & Woodland Drive. There are 2 existing dwellings on the property (Single family, one MTM) & a mobile home, sold as-is.

## PROPERTY TYPE

Site

## ZONING

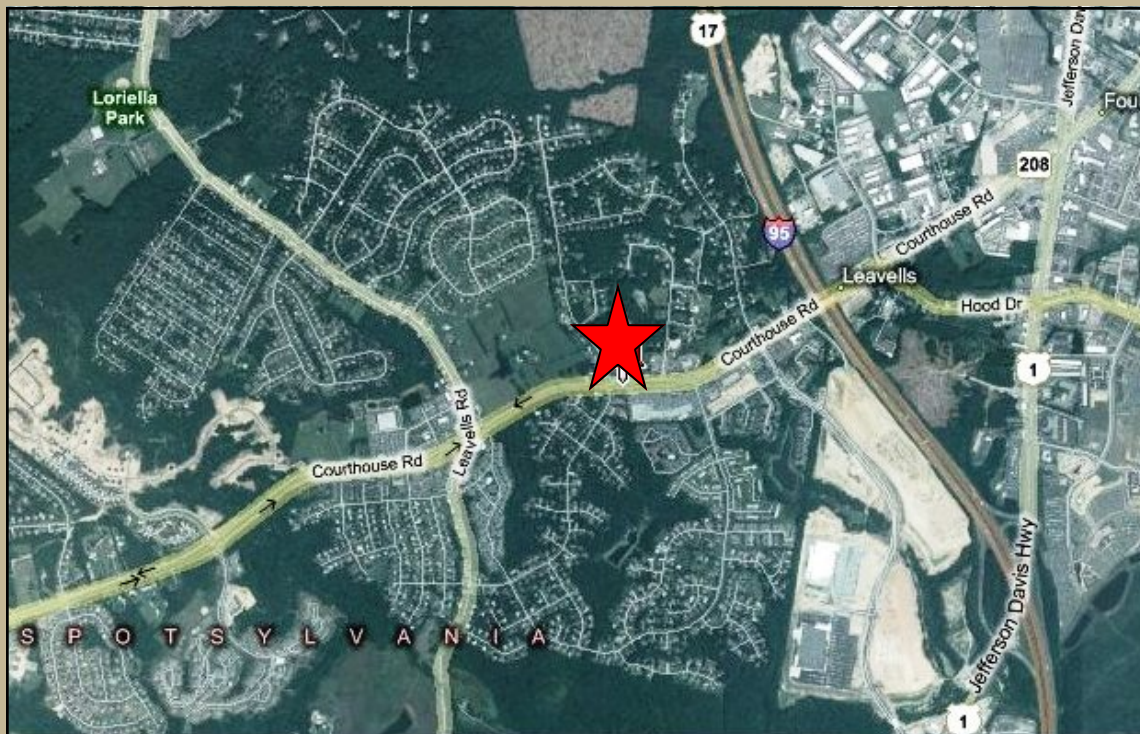
R-1 - Residential

## ACREAGE AVAILABLE

5.38

## SQUARE FEET AVAILABLE

0



## LOCATION

10608 Courthouse Road, Spotsylvania, VA

## CONTACT

Russell Seymour, Director of Economic Development  
Spotsylvania County, Department of Economic Development  
10304 Spotsylvania Avenue, Suite 440, Fredericksburg, VA 22408  
(800) 972-2526  
[www.spotsylvania.org](http://www.spotsylvania.org)

