

# Lee's Hill Commercial– 10705 Spotsylvania Avenue

## PROPERTY DESCRIPTION

First floor office space in Lee's Hill Commercial

center. 1,761 useable sf (2,020 rentable sf)

Ready for your office use; 201-202 Second

Floor 1840 useable sf (2,112 rentable sf)

- Floor 1- \$18.500/SF/Year
- Floor 2- \$17.00/SF/Year
- Great space in a great location
- Close to shopping & restaurants

## PROPERTY TYPE

Office

## ZONING

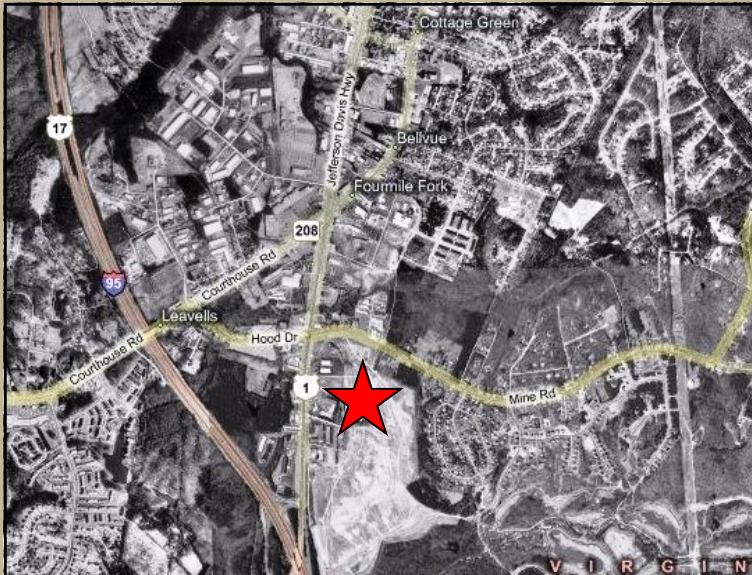
C-2

## ACREAGE AVAILABLE

0

## SQUARE FEET AVAILABLE

4,132



## LOCATION

10705 Spotsylvania Avenue, Spotsylvania, VA

## CONTACT

Russell Seymour, Director of Economic Development  
Spotsylvania County, Department of Economic Development  
10304 Spotsylvania Avenue, Suite 440, Fredericksburg, VA 22408  
(800) 972-2526  
[www.spotsylvania.org](http://www.spotsylvania.org)

