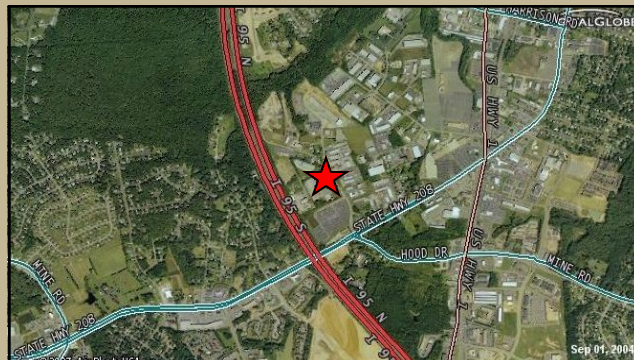


# 10848 Houser Drive

82,500 SF concrete tilt-up manufacturing and warehouse facility conveniently located 1 mile from I-95. Situated on large 8 acre fenced lot with ample parking. 5,000 SF of office space. 70 marked parking spaces. Located in Spotsylvania County off of I-95 exit 126. Conveniently 50 miles from Washington D.C. and Richmond.



## Property Description:

82,500 SF concrete tilt-up manufacturing and warehouse facility conveniently located 1 mile from I-95. Situated on large 8 acre fenced lot with ample parking. 5,000 SF of office space. 70 marked parking spaces.

## Location Description:

Located in Spotsylvania County off of I-95 exit 126. Conveniently 50 miles from Washington D.C. and Richmond.

## Zoning Description:

I-1

<b>No. Stories:</b>	1
<b>Lot Size:</b>	8.00 Acres
<b>No. Dock High Doors:</b>	7
<b>No. Grade Level Doors:</b>	3
<b>Sprinklers:</b>	Yes
<b>Fenced Yard:</b>	Yes
<b>Heating:</b>	Gas
<b>Cooling:</b>	Heat Pump in offices
<b>Additional Types:</b>	Manufacturing
<b>Power:</b>	75kva 277/480v 4wire 1200amp

## LOCATION

10848 Houser Drive, Spotsylvania, VA

## CONTACT

Russell Seymour, Director of Economic Development  
Spotsylvania County, Department of Economic Development  
10304 Spotsylvania Avenue, Suite 440, Fredericksburg, VA 22408  
(800) 972-2526  
[www.spotsylvania.org](http://www.spotsylvania.org)

