

5440 Jefferson Davis Highway

PROPERTY DESCRIPTION

Very attractive professional free standing brick building fronting on Jefferson Davis Highway. 4,000sf on the first level, 2,200sf on the second level. Many interior aesthetic qualities. Plenty of parking in the front and rear of the building.



PROPERTY TYPE

Office

ZONING

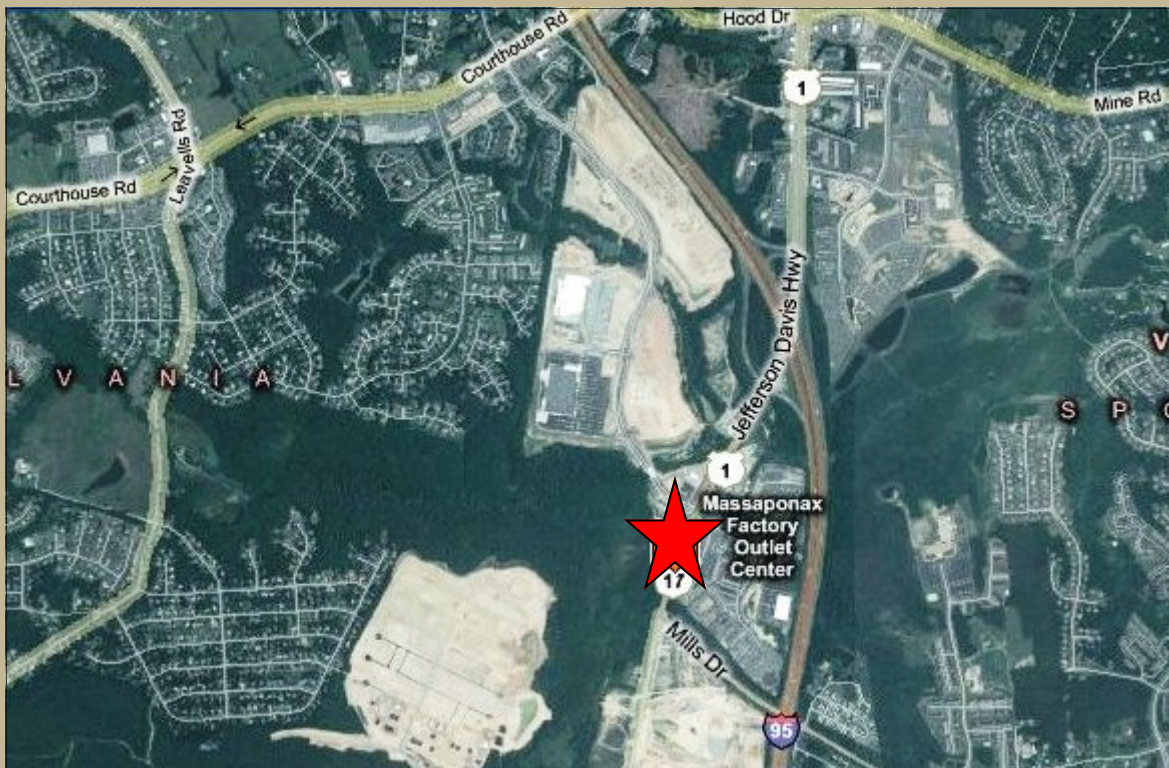
C3 - Commercial

ACREAGE AVAILABLE

0

SQUARE FEET AVAILABLE

6,200



LOCATION

5440 Jefferson Davis Highway, Spotsylvania, VA

CONTACT

Russell Seymour, Director of Economic Development
Spotsylvania County, Department of Economic Development
10304 Spotsylvania Avenue, Suite 440, Fredericksburg, VA 22408
(800) 972-2526
www.spotsylvania.org

