

6745 Jefferson Davis Highway

PROPERTY DESCRIPTION

2 acres with an existing home, shed, mobile home on property could be used as office storage for small business. Prime Commercial Potential located Adjacent to Commercial Properties.

215 ft road frontage on US RT 1 just 1/4 mile north of I-95/Rt 606/Rt 1 Interchange. Property within the Jackson Gateway comprehensive plan for 2012 of industrial/office space. Within 6 miles of new hospital, VRE, Summit Crossing. 15 min to Lake Anna, 1 hour south of Washington DC 1 hour north of Richmond, Virginia. Map Number- 63-A-102

PROPERTY TYPE

Site

ZONING

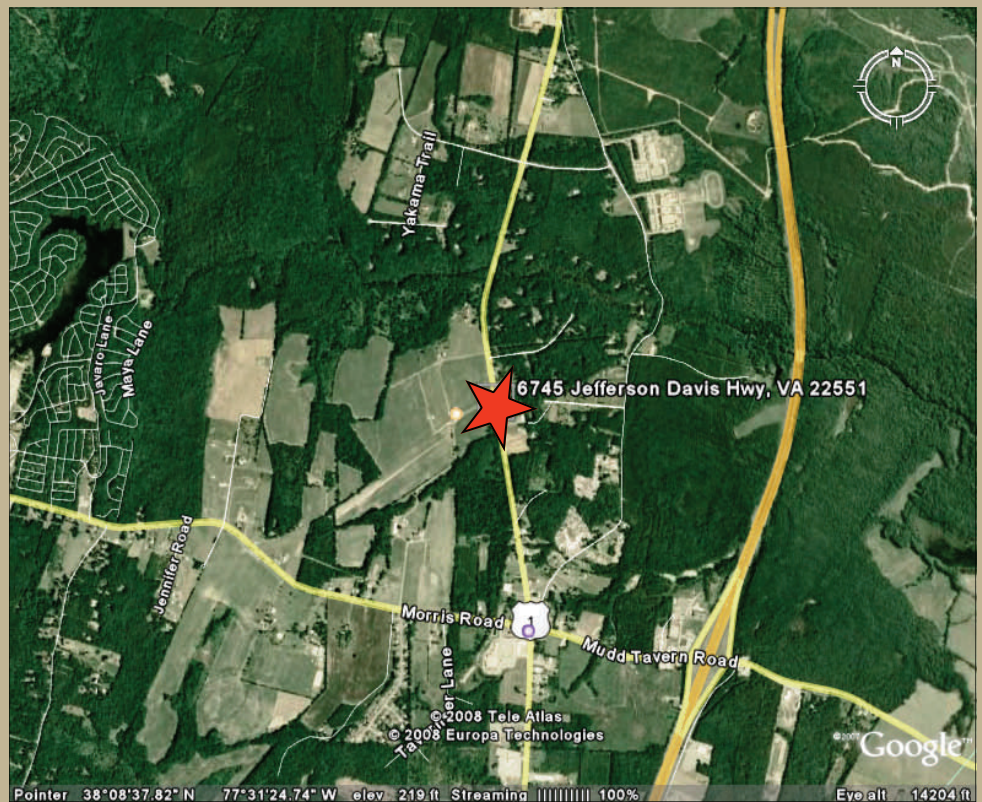
A2 -Agricultural

ACREAGE AVAILABLE

2

SQUARE FEET AVAILABLE

0



LOCATION

6745 Jefferson Davis Highway, Spotsylvania, VA

CONTACT

Russell Seymour, Director of Economic Development
Spotsylvania County, Department of Economic Development
10304 Spotsylvania Avenue, Suite 440, Fredericksburg, VA 22408
(800) 972-2526
www.spotsylvania.org

