

Crossroads (Rt. 1 & I-95)

PROPERTY DESCRIPTION

6.5 acres available. Owner will subdivide.
Water and sewer available. Fastest growing county in the US for small businesses.
Located at the on ramp to I-95 south at Rt-1.
Property is across from the new Southpoint II development. Other neighbors include restaurants and hotels.

- \$2,000,000
- \$307,692.91 per acre

PROPERTY TYPE

Site

ZONING

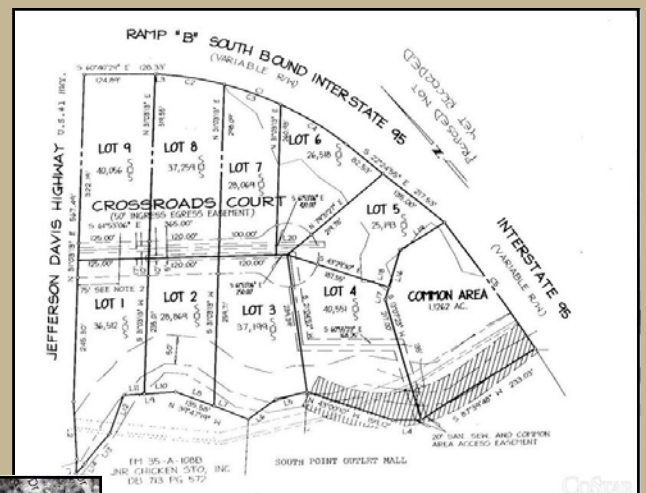
C3 - Commercial 3

ACREAGE AVAILABLE

6.5

SQUARE FEET AVAILABLE

0



LOCATION

Route 1 at I-95, Spotsylvania, VA

CONTACT

Russell Seymour, Director of Economic Development
Spotsylvania County, Department of Economic Development
10304 Spotsylvania Avenue, Suite 440, Fredericksburg, VA 22408
(800) 972-2526
www.spotsylvania.org

