

Lansdowne Business Park

PROPERTY DESCRIPTION

- Built-to-Suit Buildings of all sizes and shapes
- Property Owners' Association ensures the common area will be kept clean and presentable to your clients and staff
- Easy Access to major roads
- All major utilities
- Hi-Voltage electrical service
- Hi-Speed Internet
- Adjacent UPS shipping depot
- Adjacent to Shannon Airport
- Located in Historic Spotsylvania County



PROPERTY TYPE

Site

ZONING

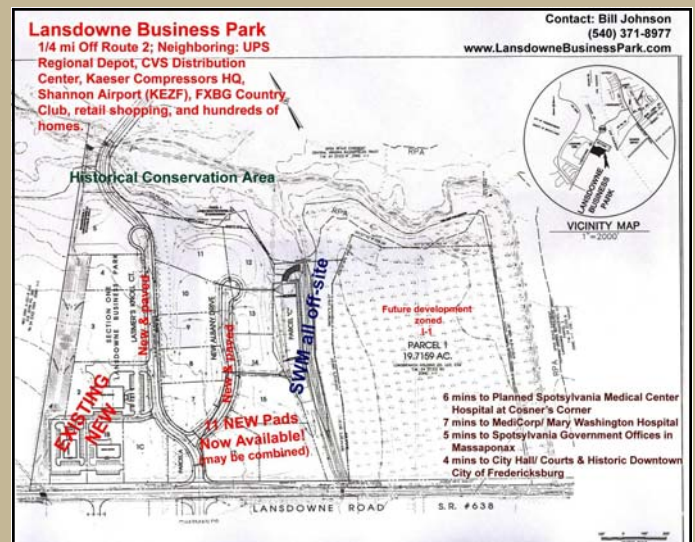
I-1 - Industrial

ACREAGE AVAILABLE

45.17

SQUARE FEET AVAILABLE

0



LOCATION

Lansdowne Road (Map Number 24-12-6-D)

CONTACT

Russell Seymour, Director of Economic Development
Spotsylvania County, Department of Economic Development
10304 Spotsylvania Avenue, Suite 440, Fredericksburg, VA 22408
(800) 972-2526
www.spotsylvania.org

