

Lee's Hill Commercial- 10700 Spotsylvania Avenue

PROPERTY DESCRIPTION

Free standing office building beautifully built out. Has numerous private office area, Large conference room, media room, kitchen. Located just off Route 1 near Interstate 95 in the Lee's Hill Commercial Center. Close to hotels, restaurants and shopping



PROPERTY TYPE

Office

ZONING

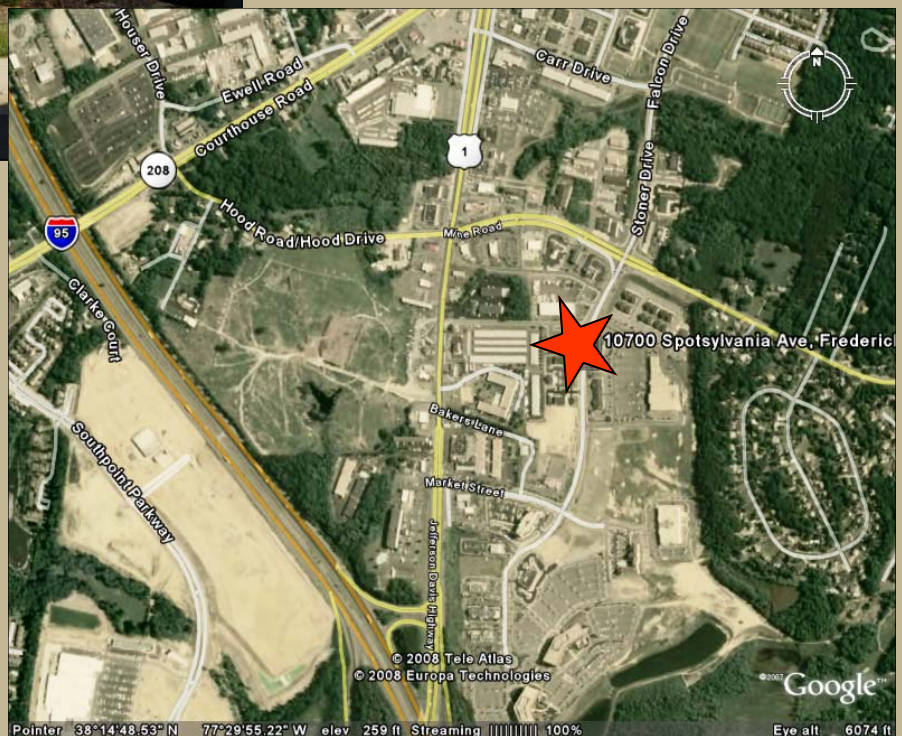
O1 - Office

ACREAGE AVAILABLE

0

SQUARE FEET AVAILABLE

6,192



LOCATION

10700 Spotsylvania Avenue, Spotsylvania, VA

CONTACT

Russell Seymour, Director of Economic Development
Spotsylvania County, Department of Economic Development
10304 Spotsylvania Avenue, Suite 440, Fredericksburg, VA 22408
(800) 972-2526
www.spotsylvania.org

