

The Shoppes at Courthouse Road

PROPERTY DESCRIPTION

FOR LEASE

LOCATION: Courthouse Road (Rt.208), 4-Mile Fork Area of Spotsylvania County, ½ Mile From The Intersection of Route 1 and Route 208, 200 yards to Hood Drive.

ZONING: C-3

SITE DESCRIPTION: Excellent location directly on Courthouse Road (Route 208) with 40,000+ cars per day. Retail/Business Office Center located directly in front of the new EXTRA SPACE STORAGE facility on route 208. Six (6) parking places per thousand square feet.

BUILDING SPACE: Individual Retail/Office space from approximately 1,200 to 10,800 SF available for lease.

BUILDING DESCRIPTION: Insulated glass storefront, standing seam metal roof, decorative EFIS accents and signband. Brick veneer exterior (four sides). Rear single 3'x7' door. Dropped acoustical ceiling and lighting. Bathroom: Drywalled, commodes, sink, fan set. concrete floor, R-30 ceiling insulation.

PROPERTY TYPE

Office

ZONING

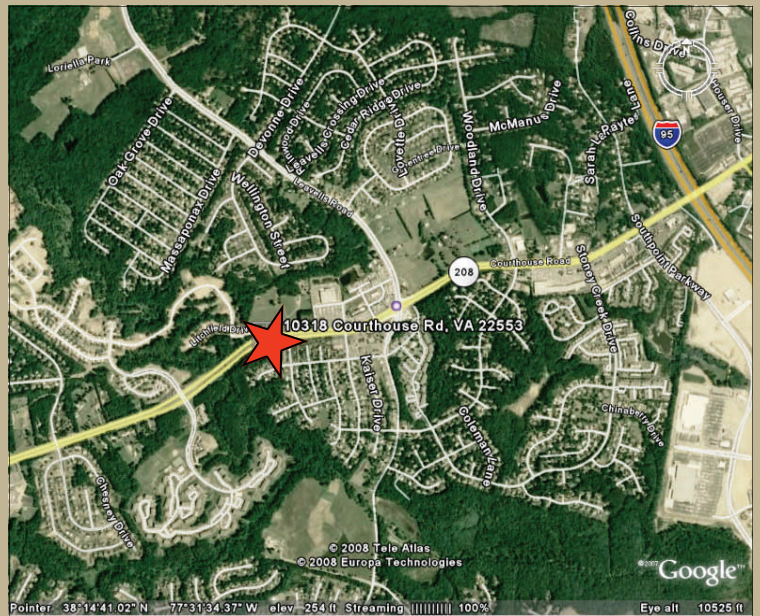
C-3- Commercial

ACREAGE AVAILABLE

0

SQUARE FEET AVAILABLE

10,800



LOCATION

10318 Courthouse Road, Spotsylvania, VA

CONTACT

Russell Seymour, Director of Economic Development
Spotsylvania County, Department of Economic Development
10304 Spotsylvania Avenue, Suite 440, Fredericksburg, VA 22408
(800) 972-2526
www.spotsylvania.org

